

A core choice:

Explaining the value

Changing a core system in a community bank or credit union is not to be taken lightly. While it's the backbone of the entire operation, it's also a pivotal part of setting the future. Telling the right story will sway strong opinions and build buy-in from leadership, employees, boards of directors, and more.

A core choice

A legacy system ...

A modern core ...



Limits products



Increases risk



Requires ongoing customizations & add-ons



Makes integration cumbersome and costly



Reduces both costs and risks



Improves innovation & meets consumer expectations



Allows new products to get to market faster



Is fully enabled for the platform world

A core transformation

Replacing the core banking system can lead to measurable performance improvements.



Smooth implementation with:

- Modern technology
- Better IT capabilities
- Superior skills



Fast delivery provided with:

- Expert planning & evaluation
- Error reduction
- Organizational consensus



Best practices achieved by:

- Re-engineering business processes
- Solving efficiency challenges
- Improving sales & service performance



Transform operations by:

- Streamlining & automating operating environment
- Standardizing processes & rationalizing systems
- Adapting to changes in ecosystem & business requirements

- Deploy & integrate emerging technologies
- Gain roadmap for future innovation
- Leverage business intelligence
- Improve top & bottom-line results (growth, efficiency, savings & risk reduction)

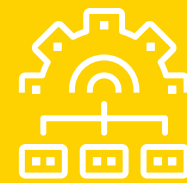
Fusion Phoenix customers have achieved these *Results*



26%
reduction in total cost of ownership



\$275K
saved in efficiency gains per year



16 to 2
FTEs processing promotional program submissions



50% - 67%
reduction in time to open a new account



9
third-party vendors eliminated



100%
increase in commercial loan business

Get more from your core with [Fusion Phoenix](#), a foundation that goes beyond traditional legacy core systems. Built completely on Microsoft® technology with built-in features that reduce costs and make your institution more effective now and in the future.